

Jorge Villavicencio Grossmann  
(Peru)

**Pasiphaë**  
for orchestra

Score

Digitally  
Distributed by  
 **Filarmonika™**  
[www.filarmonika.com](http://www.filarmonika.com)

# Pasiphaë: a piece for orchestra

Pasiphaë: uma peça para orquestra

Pasiphaë: una pieza para orquesta

After Jackson Pollock's homonymous painting

Baseada na obra homônima de Jackson Pollock

Basada en la obra homónima de Jackson Pollock

Orchestration/Orquestração/Orquestación

Piccolo flute/Piccolo/Piccolo

2 Flutes/Flautas/Flautas

2 Oboes/Oboés/Oboes

English horn/Corne Inglês/Corno Inglês

2 Clarinets in B-flat (2nd doubling Piccolo Clarinet in E-flat)/Clarinetas em Si bemol (2a dobr. Picc. em Mi bemol)/Clarinetes en Si bemol (2o dobl. Picc. en Mi bemol)

Bass clarinet/Clarinetas baixo/Clarinete bajo

2 Bassoons/Fagotes/Fagots

Contrabassoon/Contrafagote/Contrafagot

4 French horns/Trompas/Cornos

3 Trumpets/Trompetes/Trompetas

3 Trombones/Trombones/Trombones

Tuba/Tuba/Tuba

Timpani + Percussion (4 players)/Tímpanos + Percussão (4 instrumentistas)/Timbales + Percusión (4 instrumentistas)

Celesta/Celesta/Celesta

Harp/Harpa/Arpa

16 1st violins/1os violinos/1os violines

14 2nd violins/2os violinos/2os violines

12 violas/violas/violas

10 cellos/violoncelos/violonchelos

8 contrabasses/contrabaixos/contrabajos

Transposed score/Partitura transposta/Partitura transpuesta

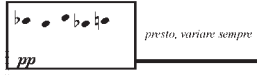
Duration/Duração/Duración: ca. 12 min.

Winner, Jacob Druckman Award for Orchestral Composition, Aspen Music Festival, Aspen, CO, 2007

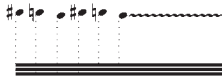
Honorable Mention, Lepo Sumera International Orchestral Composition Competition, Tallinn, Estonia, 2003

Winner, Boston University Orchestral Composition Competition, Boston, MA, 2003

## NOTES/NOTAS/NOTAS



Repeat pitches in any order at given tempo / Repetir notas em qualquer ordem no tempo escrito / Repetir las notas dadas en cualquier orden al tiempo escrito



Repeat same figure until end of the wavy line / Repetir a mesma figura até o fim da linha ondulada / Repetir la misma figura hasta el final de la línea ondulada



Repeat same cell as many times as needed until cue / Repetir a mesma célula quantas vezes for necessário até a indicação do regente / Repetir la misma célula cuantas veces sea necesario hasta la indicación del director

The present version of this work is a revision of "Pasiphaë: a piece for symphony orchestra" submitted in partial fulfilment of the requirements for the Master of Music in Composition at Florida International University, in Miami, Florida and filed at the FIU Special Collection Library under call No. M0.G76 2000.

A presente versão desta obra é uma revisão de "Pasiphaë: a piece for symphony orchestra" submetida em cumprimento parcial dos requerimentos para o Mestrado em Composição da Florida International University de Miami, Flórida e arquivada na seção de coleções especiais da biblioteca da FIU sob número M0.G76 2000.

La presente versión de esta obra es una revisión de "Pasiphaë: a piece for symphony orchestra" entregada en parcial cumplimiento de los requisitos para la Maestría en Composición Musical de la Florida International University de Miami, Florida y archivada en la colección especial de la biblioteca de FIU bajo el número M0.G76 2000.

# Pasiphaë

## Andante Lugubre (♩ = 52)

Jorge Villavicencio Grossmann

6/4 4/4 5/4 4/4 5/4

Piccolo  
Flute 1  
Flute 2  
Oboe 1  
Oboe 2  
English Horn  
Clarinet 1 (B)  
Clarinet 2 (B)  
Bass Cl.  
Bassoon 1  
Bassoon 2  
Contrabassoon  
Horns 1-2  
Horns 3-4  
C Trumpet 1  
C Trumpet 2  
C Trumpet 3  
Trombone 1-2  
Trombone 3  
Tuba  
Perc. 1 { Glockenspiel, xylophone, vibraphone, tub. bells  
Perc. 2 { Crotales, vibraphone, tub. bells, GC.  
Timpani  
Perc. 4 { Susp. cymb., Crotales, S. drum, Tam-tam, Bongo, Claves  
Celesta  
Harp

## Andante Lugubre (♩ = 52)

6/4 4/4 5/4 4/4 5/4

Violin I  
Violin II  
Viola  
Cello  
Contrabass

5 3 4 3 4 3 4

74 4 4 4 4 4 4 4

E. Hn. *poco accel.* *morendo*

B. Cl.

C. Bn.

Hns. 3-4 *pp* IV.

Vcl. *pp*

Cb. *pp*

4 3 5 2

14 4 4 8 4

Ob. 1 *sfzp*

Ob. 2 *sfzp*

B $\flat$  Cl. 1 *sfzp*

Cl. 2 (B $\flat$ ) *sfzp*

B. Cl.

C. Bn.

Hns. 1-2

Hns. 3-4 *ff* *fff*

C Tpt. 1 *ff* *fff*

C Tpt. 2 *ff* *fff*

C Tpt. 3 *ff* *fff*

Tbns. 1-2 *f* *ff* *fff*

Tbn. 3 *ff* *fff*

Tb. *ff* *fff*

Timp. *p* *fff* *ff* *fff*

Vcl. *pp*

Cb. *pp*

4/4 20 4/4 2/4

Fl. 1 *ff* *espressivo* *p*

Fl. 2 *ff* *espressivo* *p*

Ob. 1 *ff* *espressivo* *p*

Ob. 2 *ff* *p* *mp*

B♭ Cl. 1 *f*

Cl. 2 (B♭) *p*

B. Cl. *pp*

Bn. 1 *p*

Bn. 2 *mf*

Hns. 1-2

Hns. 3-4

C Tpt. 1 *p* *str. mute*

C Tpt. 2

C Tpt. 3 *p* *str. mute*

Tbns. 1-2

Tbn. 3

Tb.

Timp.

Vln. I *mf*

Vln. II *espress.* *mf*

Vla.

Vel.

Cb.

*pp*

22  $\frac{2}{4}$   $\frac{3}{4}$   $\frac{2}{4}$

Picc. *mf* *f* *Ritenero un poco*

Fl. 1 *f* 3

Fl. 2

Ob. 1 *f* 3 6

Ob. 2 *mp*

B♭ Cl. 1 *f* 3

Cl. 2 (B♭)

Bn. 1 3

Bn. 2

C Tpt. 1

C Tpt. 2

C Tpt. 3

22  $\frac{2}{4}$   $\frac{3}{4}$   $\frac{2}{4}$

Vln. I *ff* *p sub.* 12

Vln. II *ff* *p sub.* 12

Vln. II *ff* *p sub.* 12

Vln. II *ff* *p sub.* 12

Vla. *p* *sul pont.* *molto*

Vcl. *pp* 3

Cb. *pp* 5

FOR REFERENCE ONLY  
NOT FOR PUBLIC  
PERFORMANCE USE  
WITH OUT PERMISSION